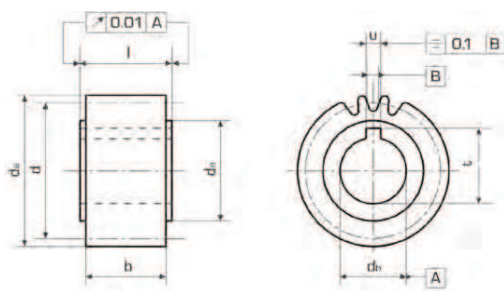


## Stirnräder mit geschliffenen Zahnflanken, geradeverzahnt

### Spur Gears with Straight Ground Teeth



Modul | module **2,0**

Verzahnungsqualität | toothing quality **7 e25**

geradverzahnt | straight teeth

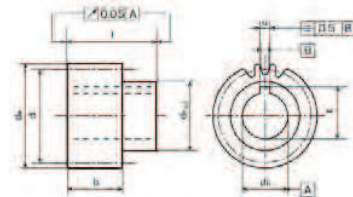
Eingriffswinkel | pressure angle **20°**

einsatzgehärtet | case hardened

Material | material **1.7131 [16MnCr5]**

Zähnez. No. teeth	$d_a$	$d$	$d_b$ H6	$d_n$	$b$	$l$	$u$	$t$	Bestell Nr. Part No.
16	36,0	32,0	15	25	28	30	5	17,3	113-120-516
18	40,0	36,0	20	25	28	30	6	22,8	113-220-018
20	44,0	40,0	20	30	28	30	6	22,8	113-220-020
22	48,0	44,0	15	25	28	30	5	17,3	113-120-522
22	48,0	44,0	20	30	28	30	6	22,8	113-220-022
22	48,0	44,0	25	36	28	30	8	28,3	113-220-522
25	54,0	50,0	20	30	28	30	6	22,8	113-220-025
25	54,0	50,0	25	36	28	30	8	28,3	113-220-525
25	54,0	50,0	30	45	28	30	8	33,3	113-320-025
28	60,0	56,0	20	30	28	30	6	22,8	113-220-028
28	60,0	56,0	25	36	28	30	8	28,3	113-220-528
28	60,0	56,0	30	45	28	30	8	33,3	113-320-028
28	60,0	56,0	35	48	28	30	10	38,3	113-320-528
32	68,0	64,0	20	30	28	30	6	22,8	113-220-032
32	68,0	64,0	25	36	28	30	8	28,3	113-220-532
32	68,0	64,0	30	45	28	30	8	33,3	113-320-032
32	68,0	64,0	35	48	28	30	10	38,3	113-320-532
36	76,0	72,0	25	36	28	30	8	28,3	113-220-536
36	76,0	72,0	30	45	28	30	8	33,3	113-320-036
36	76,0	72,0	35	48	28	30	10	38,3	113-320-536
36	76,0	72,0	45	58	28	30	14	48,8	113-420-536
40	84,0	80,0	25	36	28	30	8	28,3	113-220-540
40	84,0	80,0	30	45	28	30	8	33,3	113-320-040
40	84,0	80,0	35	48	28	30	10	38,3	113-320-540
40	84,0	80,0	45	58	28	30	14	48,8	113-420-540
45	94,0	90,0	35	48	28	30	10	38,3	113-320-545
45	94,0	90,0	45	58	28	30	14	48,8	113-420-545
50	104,0	100,0	35	48	28	30	10	38,3	113-320-550
50	104,0	100,0	45	58	28	30	14	48,8	113-420-550

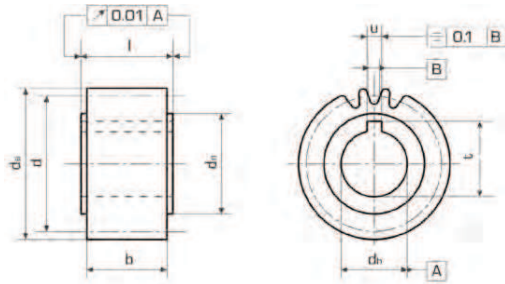
mit Nabe | with hub



Zähnez. No. teeth	$d_a$	$d$	$d_b$ H6	$d_n$	$b$	$l$	$u$	$t$	Bestell Nr. Part No.
20	44,0	40,0	19	30	28	56	6	21,8	115-120-920
20	44,0	40,0	22	36	28	56	6	24,8	115-220-220
22	48,0	44,0	19	30	28	56	6	21,8	115-120-922
22	48,0	44,0	22	36	28	56	6	24,8	115-220-222
25	54,0	50,0	16	30	28	54	5	18,3	115-120-625
25	54,0	50,0	19	30	28	56	6	21,8	115-120-925
25	54,0	50,0	22	36	28	56	6	24,8	115-220-225
28	60,0	56,0	19	30	28	56	6	21,8	115-120-928
28	60,0	56,0	30	50	28	60	8	33,3	115-320-028
32	68,0	64,0	16	30	28	54	5	18,3	115-120-632
32	68,0	64,0	22	36	28	56	6	24,8	115-220-232
32	68,0	64,0	30	50	28	60	8	33,3	115-320-032
32	68,0	64,0	32	55	28	65	10	35,3	115-320-232
36	76,0	72,0	40	62	28	65	12	43,3	115-420-036
40	84,0	80,0	32	55	28	65	10	35,3	115-320-240
40	84,0	80,0	40	62	28	65	12	43,3	115-420-040
40	84,0	80,0	45	68	28	65	14	48,8	115-420-540
50	104,0	100,0	45	68	28	65	14	48,8	115-420-550

## Stirnräder mit geschliffenen Zahnflanken, geradverzahnt

### Spur Gears with Straight Ground Teeth



Modul | module **3,0**

Verzahnungsqualität | toothing quality **7 e25**

geradverzahnt | straight teeth

Eingriffswinkel | pressure angle **20°**

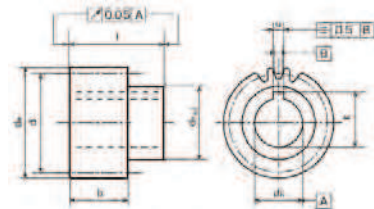
einsatzgehärtet | case hardened

Material | material **1.7131**

**[16MnCr5]**

Zähnez. No. teeth	$d_a$	$d$	$d_b$ H6	$d_n$	$b$	$l$	$u$	$t$	Bestell Nr. Part No.
18	60,0	54,0	25	36	28	30	8	28,3	113-230-518
20	66,0	60,0	25	36	28	30	8	28,3	113-230-520
20	66,0	60,0	30	45	28	30	8	33,3	113-330-020
20	66,0	60,0	35	48	28	30	10	38,3	113-330-520
22	72,0	66,0	25	36	28	30	8	28,3	113-230-522
22	72,0	66,0	30	45	28	30	8	33,3	113-330-022
22	72,0	66,0	35	48	28	30	10	38,3	113-330-522
25	81,0	75,0	25	36	28	30	8	28,3	113-230-525
25	81,0	75,0	30	45	28	30	8	33,3	113-330-025
25	81,0	75,0	35	48	28	30	10	38,3	113-330-525
25	81,0	75,0	45	58	28	30	14	48,8	113-430-525
28	90,0	84,0	25	36	28	30	8	28,3	113-230-528
28	90,0	84,0	30	45	28	30	8	33,3	113-330-028
28	90,0	84,0	35	48	28	30	10	38,3	113-330-528
28	90,0	84,0	45	58	28	30	14	48,8	113-430-528
32	102,0	96,0	25	36	28	30	8	28,3	113-230-532
32	102,0	96,0	30	45	28	30	8	33,3	113-330-032
32	102,0	96,0	35	48	28	30	10	38,3	113-330-532
32	102,0	96,0	45	58	28	30	14	48,8	113-430-532
36	114,0	108,0	35	48	28	30	10	38,3	113-330-536
36	114,0	108,0	45	58	28	30	14	48,8	113-430-536
40	126,0	120,0	35	48	28	30	10	38,3	113-330-540
40	126,0	120,0	45	58	28	30	14	48,8	113-430-540

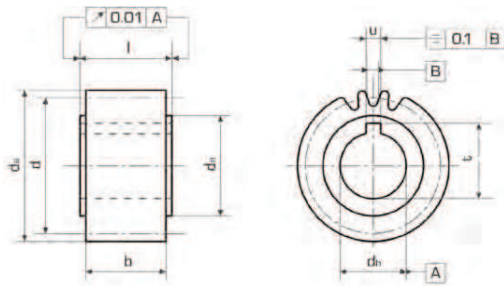
mit Nabe | with hub



Zähnez. No. teeth	$d_a$	$d$	$d_b$ H6	$d_n$	$b$	$l$	$u$	$t$	Bestell Nr. Part No.
22	72,0	66,0	22	36	28	56	6	24,8	115-230-222
22	72,0	66,0	25	44	28	60	8	28,3	115-230-522
22	72,0	66,0	30	50	28	60	8	33,3	115-330-022
22	72,0	66,0	32	55	28	65	10	35,3	115-330-222
22	72,0	66,0	35	55	28	65	10	38,3	115-330-522
22	72,0	66,0	40	62	28	65	12	43,3	115-430-022
25	81,0	75,0	32	55	28	65	10	35,3	115-330-225
25	81,0	75,0	40	62	28	65	12	43,3	115-430-025
28	90,0	84,0	22	36	28	56	6	24,8	115-230-228
28	90,0	84,0	25	44	28	60	8	28,3	115-230-528
28	90,0	84,0	30	50	28	60	8	33,3	115-330-028
28	90,0	84,0	32	55	28	65	10	35,3	115-330-228
28	90,0	84,0	35	55	28	65	10	38,3	115-330-528
28	90,0	84,0	40	62	28	65	12	43,3	115-430-028
28	90,0	84,0	45	68	28	65	14	48,8	115-430-528
32	102,0	96,0	32	55	28	65	10	35,3	115-330-232
32	102,0	96,0	40	62	28	65	12	43,3	115-430-032
36	114,0	108,0	45	68	28	65	14	48,8	115-430-536

## Stirnräder mit geschliffenen Zahnflanken, geradverzahnt

### Spur Gears with Straight Ground Teeth



Modul | module **4,0**

Verzahnungsqualität | toothing quality **7 e25**

geradverzahnt | straight teeth

Eingriffswinkel | pressure angle **20°**

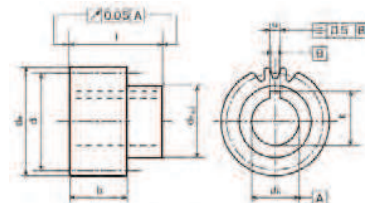
einsatzgehärtet | case hardened

Material | material **1.7131**

**[16MnCr5]**

Zähnez. No. teeth	$d_a$	$d$	$d_b$ H6	$d_n$	$b$	$l$	$u$	$t$	Bestell Nr. Part No.
20	88,0	80,0	35	52	40	50	10	38,3	113-340-520
20	88,0	80,0	45	65	40	50	14	48,8	113-440-520
22	96,0	88,0	35	52	40	50	10	38,3	113-340-522
22	96,0	88,0	45	65	40	50	14	48,8	113-440-522
25	108,0	100,0	35	52	40	50	10	38,3	113-340-525
25	108,0	100,0	45	65	40	50	14	48,8	113-440-525
28	120,0	112,0	35	52	40	50	10	38,3	113-340-528
28	120,0	112,0	45	65	40	50	14	48,8	113-440-528
32	136,0	128,0	35	52	40	50	10	38,3	113-340-532
32	136,0	128,0	45	65	40	50	14	48,8	113-440-532
40	168,0	160,0	45	65	40	50	14	48,8	113-440-540
40	168,0	160,0	60	80	40	50	18	64,3	113-640-040

mit Nabe | with hub



Zähnez. No. teeth	$d_a$	$d$	$d_b$ H6	$d_n$	$b$	$l$	$u$	$t$	Bestell Nr. Part No.
20	88,0	80,0	32	55	40	75	10	35,3	115-340-220
20	88,0	80,0	35	55	40	75	10	38,3	115-340-520
20	88,0	80,0	40	62	40	75	12	43,3	115-440-020
22	96,0	88,0	45	68	40	75	14	48,8	115-440-522
25	108,0	100,0	32	55	40	75	10	35,3	115-340-225
25	108,0	100,0	35	55	40	75	10	38,3	115-340-525
25	108,0	100,0	40	62	40	75	12	43,3	115-440-025
25	108,0	100,0	55	80	40	80	16	59,3	115-540-525
28	120,0	112,0	45	68	40	75	14	48,8	115-440-528
32	136,0	128,0	55	80	40	80	16	59,3	115-540-532
32	136,0	128,0	75	110	40	100	20	80,4	115-740-532
40	168,0	160,0	75	110	40	100	20	80,4	115-740-540