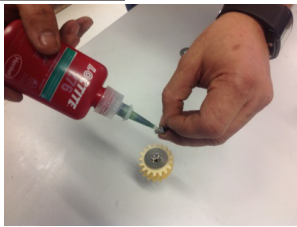


QuickGuide

PU-Lubrication Pinion

Step 1:

Assembly
lubrication pinion on axis



The lubrication pinion will be delivered separately from the axis.

The lubrication pinion and the axis are not mounted!

The screw has to be glued into the axis!

Take care, there is no glue between sleeve bearing of the pinion and the axis.

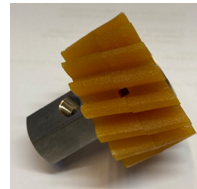
The glue has to be dry out min. 7h

Step 2:

Connection with prefilled tubes

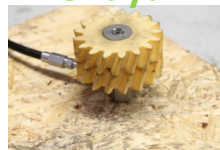
Lubrication pinions have to be prefilled with oil or grease.

Lay down the pinion into mineral oil and wait around 1-2 minutes. The pinion will be protected against abrasion for a short time.



Subsequently prefill the pinion with grease with subsequently turning of the pinion on the axis.

okay!



wrong!

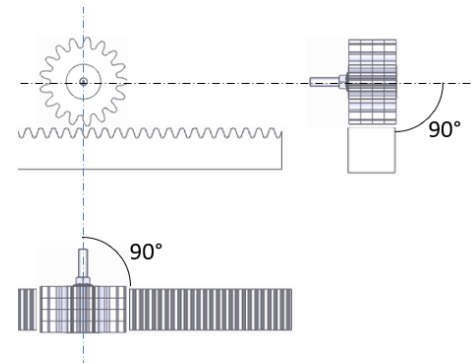
**to fast, to much grease,
no rotation of the pinion**



ATTENTION: Never use the lubrication pinion in dry conditions!

Step 3:

Assembly of lubrication pinions



Installation details:

The lubrication pinion has to be mounted very accurate, right angled into the moving direction.

Do not mount to tight!

The lubrication pinion need clearance from 0,5 to 0,7mm!