



INNOVATION
is what **DRIVES** us

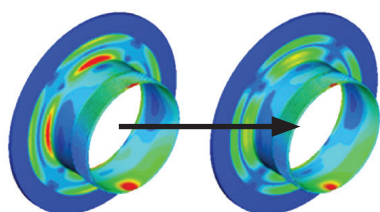
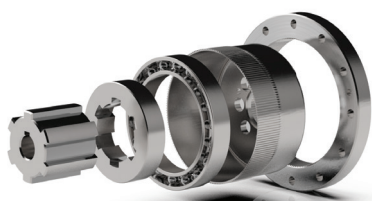
Robot gearboxes for demanding requirements – Flexwave B2

At Nidec, even successful products are subject to constant improvement and the highest quality requirements.

New geometric ratios between the gear teeth have led to significant improvements in the power density of Flexwave B2. Countless practical tests confirm the results of the FEM simulations. Our customers benefit from the following features:

- Up to 33% more torque strength and overload safety
- Increased power density with same design
- Improved angular accuracies
- Reduced noise emissions
- Enlarged inner diameter of the hollow shaft

And as always, the following still applies:
Reliable lead times even in challenging times

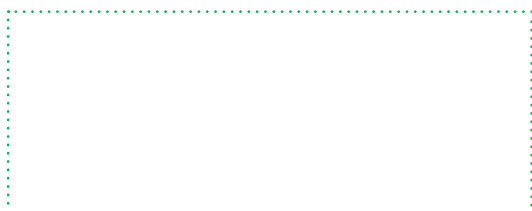


Up to 30% more
average torsional rigidity

NEWSLETTER

June 2022 | Nr.41

Graessner GmbH, Hirschstettnerstraße 19/O/B0103, 1220 Vienna, Austria



■ Here you can find additional up-to-date information:
graessner.at/news.php





NIDEC CORPORATION