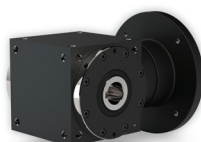
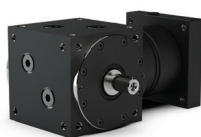


PowerGear X



PowerGear P



PowerGear HS

Visit us at the



07.03.23-08.03.23, Booth B2-307

Bevel gearboxes for a wide variety of applications

A bevel gear alone is meaningless. Bevel gear technology is at the heart of an assembly consisting of housing, shafts, flanges and bearings resulting in a high performance gearbox.

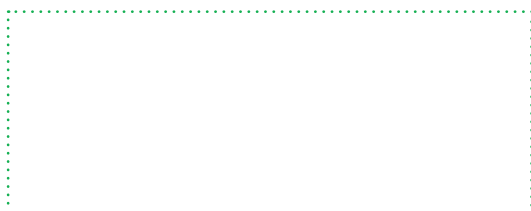
The PowerGear P, X and HS gearboxes are versatile in their application and deliver maximum performance in a wide range of industrial applications. They are powerful gearboxes that are able to optimally convert large engine outputs.

- Ratios 1:1 to 5:1
- Torques up to 9300Nm
- Low maintenance
- Numerous variants and options available
- Robust design with tapered roller bearings and housing made of nodular cast iron
- High efficiency

NEWSLETTER

March 2023 | Nr.44

Graessner GmbH, Hirschstettnerstraße 19/O/B0103, 1220 Vienna, Austria



- Here you can find additional up-to-date information:
graessner.at/en/bevel-gears/PowerGear-The-classic-angular-gear.0c456.php



